

Proposed Derryadd Wind Farm

Summer 2017 Newsletter



Proposed Derryadd Wind Farm

Summer 2017 Newsletter

Message from Derryadd Wind Farm Communications Team

Dear Resident,

Bord na Móna Powergen would like to take this opportunity to thank everyone who attended the various public consultation events in January and September/October 2016 and the recent Public Clinic on the 25th May held in relation to the proposed Derryadd Wind Farm. This newsletter provides information and updates about the project, the Community Engagement Forum as well as answers to some of the frequently asked questions in relation to the proposed development. You will also find contact details for third party independent bodies should you wish to contact them for further information on wind energy. Further newsletters will be produced as the project progresses.

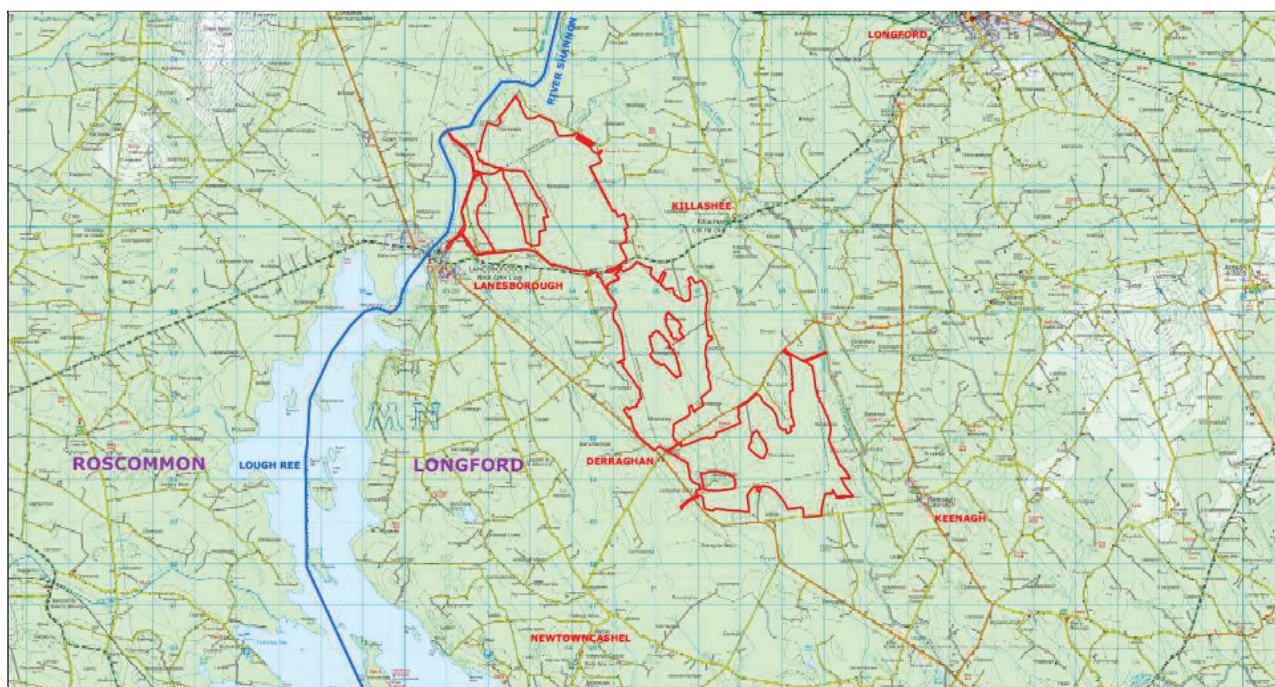
Yours faithfully,

Derryadd Wind Farm Communications Team



Project Overview

Bord na Móna Powergen intends to seek planning permission for a wind farm on Derryarogue, Derryadd and Lough Bannow bogs, located in south Co. Longford. The three bog areas on which the proposed wind farm will be located are generally circumscribed by the communities of Derraghan, Keenagh, Killashee and Lanesborough. The purpose of the Derryadd Wind Farm will be to generate renewable electricity for the domestic electricity market in Ireland. This will enable Ireland to play its part in tackling global warming and climate change as well as improving the country's energy security.



087 7087022

derryaddwindfarm@bnm.ie

www.derryaddwindfarm.ie

Project Update

Preferred Draft Approach to Wind Energy Development Guidelines

On the 13th of June 2017, the then Minister for Housing, Planning and Local Government, Simon Coveney T.D., and the Minister for Communications, Climate Action and Environment, Denis Naughten T.D., issued a press release stating that they have developed a Preferred Draft Approach to wind energy development in Ireland. Minister Coveney stated that this approach was developed *“to address the key aspects of the review of the Guidelines which I feel strikes the appropriate balance between facilitating future wind projects, in the context of ensuring we can deliver on our EU renewable energy targets, while simultaneously addressing the genuine concerns of local communities in the areas where wind farm developments are proposed”*.

The full press release can be viewed on: <http://www.merrionstreet.ie/en/News-Room/Releases/>

Key Aspects of the Preferred Draft Approach to Wind Energy Development Guidelines

According to the press release issued on the 13th of June 2017, the preferred draft approach has four key aspects which are:

- The application of a more stringent noise limit
- A visual amenity setback of four times the turbine height between a wind turbine and the nearest residential property, subject to a mandatory minimum distance of 500 metres.
- Elimination of shadow flicker
- Introduction of new obligations in relation to engagement with local communities by wind farm developers

The Minister also indicated that a Strategic Environmental Assessment (SEA) would be undertaken on the proposed approach to the revised guidelines which will allow for public consultation. The estimated timeline by the Department for the completion of the SEA process, finalisation of the new statutory guidelines and the issue to planning authorities is Q1 2018.

Preferred Draft Approach and the proposed Derryadd Wind Farm

The detailed draft wind energy development guidelines have yet to be issued by the Government. Therefore, Bord na Móna is currently considering the information made available within the press release and how this draft approach might influence the proposed planning application of the Derryadd Wind Farm. It is envisaged that the planning application date will now be delayed instead of the original target of August 2017. We will continue to keep you updated on any developments in this area.

Proposed Derryadd Wind Farm

Summer 2017 Newsletter

New Project Website

In June, Bord na Móna Powergen launched the project specific website for the proposed Derryadd Wind Farm project. The aim of this website is to act as an additional communications channel for the project while also complying with the new Code of Practice for Wind Energy Development in Ireland. This website will contain copies of the project newsletters, layout maps and amenity maps. It will be continued to be updated as more information becomes available on the project. The new website address is: www.derryaddwindfarm.ie

Appointment of Community Liaison Officer



On the 21st of December 2016, the Department of Communications, Climate Action and Environment published the Code of Practice for Wind Energy Development in Ireland Guidelines for Community Engagement. This document states that each project should have *"A nominated Community Liaison Officer (CLO) should be appointed by the project promoter, with readily accessible contact details, who should be available to neighbouring residents and community groups from the initial project development phases, through to the operational phase of the wind farm"*.

Following the standard Bord na Móna recruitment process, James Rowan has been appointed as the Community Liaison Officer across a number of Bord na Móna development projects. Should you have any queries regarding the proposed project please contact James using the contact details below.

Community Gain Scheme

Bord na Móna is proposing to replicate its Community Gain Scheme model (currently operational at Mountlucas Wind Farm) in the context of the Derryadd Wind Farm. In accordance with the Irish Wind Energy Association (IWEA) best practice, an annual fund of €1,000/MW of installed capacity per annum, indexed for the lifetime of the project, will be established. This fund will look to support the local communities, through funding of projects and community services both on the wind farm and to groups/associations in close proximity to the development.



Groups local to Mountlucas Wind Farm at the Launch of the 2017 Community Gain Scheme. To date, over €300,000 has been given to local schools, clubs, groups, societies and not-for-profit organisations in close proximity to the wind farm.

087 7087022

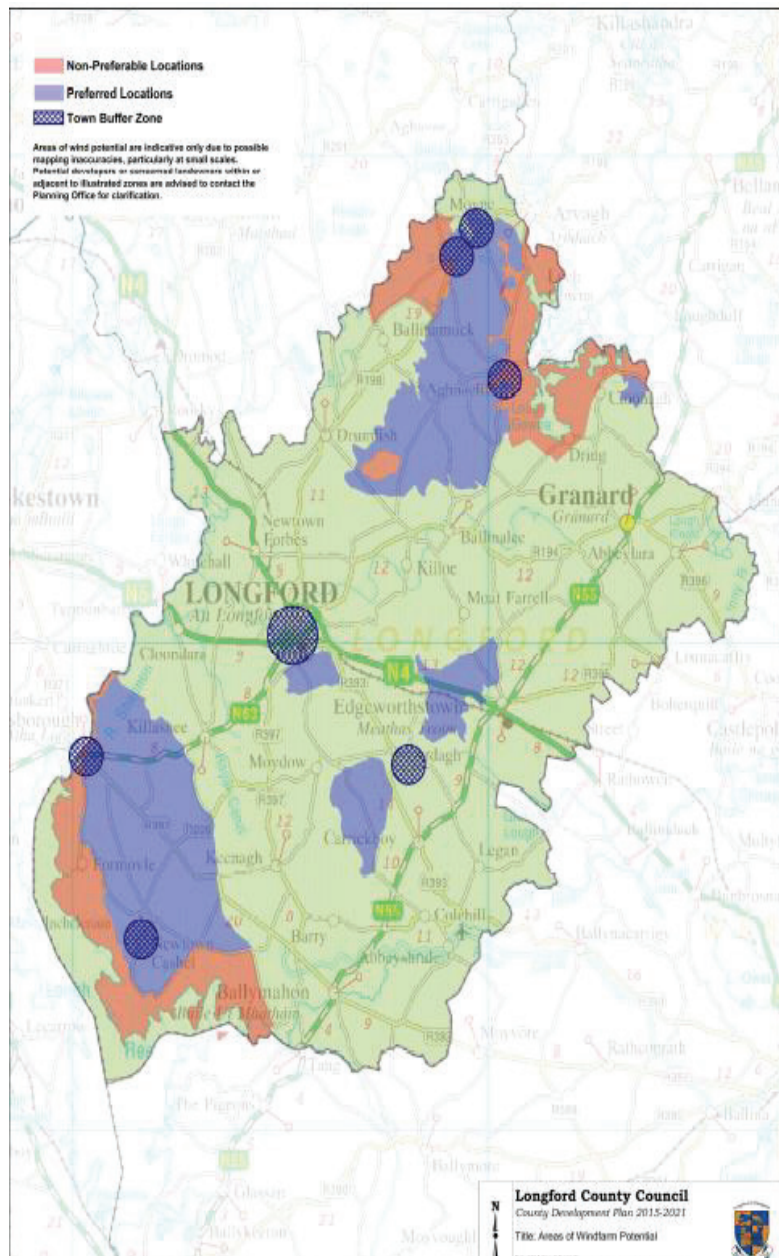
derryaddwindfarm@bnm.ie

www.derryaddwindfarm.ie

Site Selection

Bord na Móna has conducted a detailed site selection exercise to identify the optimal site for the development of a large-scale wind energy project. The study examined a number of cutaway sites within the Bord na Móna land bank and found that Derryadd, Derryarogue and Lough Bannow bogs were the optimal site for the proposed development. The company selected the proposed site in south Longford for the following reasons:

- It has a wind regime that will support a commercially viable wind farm;
- There is close access to the national electricity grid;
- There is relatively good road access to the site;
- It is a brown field site, the majority of which is already at the end of peat production;
- It presents a clear expanse of land with minimal internal dwellings, and is a reasonable distance from existing houses around the periphery of the site;
- It will improve the geographical distribution of wind energy facilities nationally, and hence contribute to a more balanced input of wind energy to the grid;
- It is located within an area identified by Longford County Development Plan 2015-2021 as suitable for wind farm development
- The Midland Regional Planning Guidelines identify that the worked out peatland areas offer potential for renewable energy installations; including wind energy
- Wind farms are considered an appropriate after-use of cutaway peatland.



Appendix 5: Longford County Development Plan Areas of Wind Farm Potential

Source: <http://www.longfordcoco.ie/Services/Planning/Development-Plan-2015-2021/Appendices/Appendix-5-Areas-of-Wind-Farm-Potential.pdf>

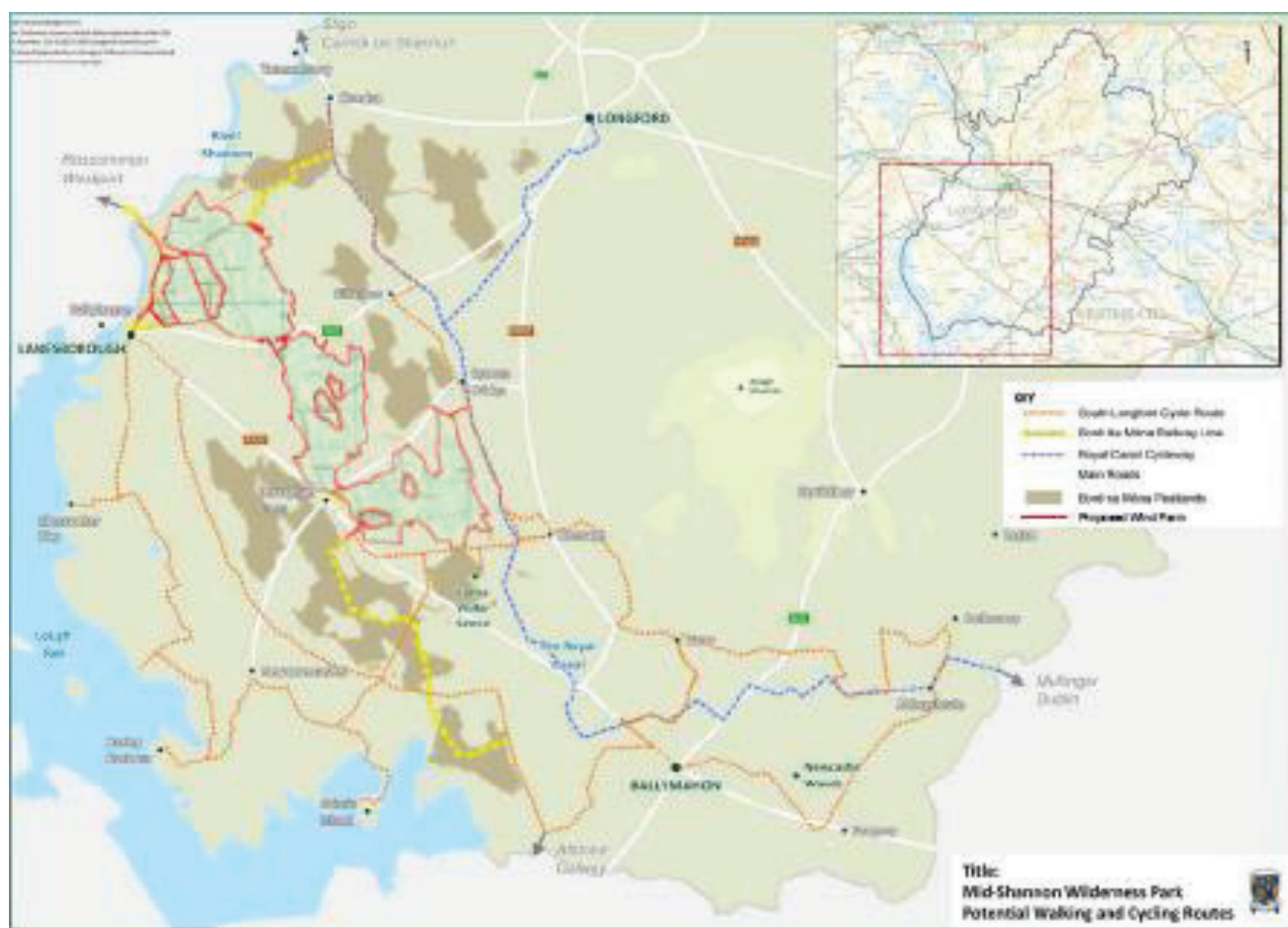
Proposed Derryadd Wind Farm

Summer 2017 Newsletter

Wind Farms and Tourism

Awareness of wind farms amongst visitors to Ireland is high as many other countries have wind turbines generating their clean energy too, so tourists are used to wind energy. The most recent Bord Fáilte Report – Visitors Attitudes on the Environment Wind Farms 2012 (update on 2007 research) found that over 95% of visitors claimed to have seen a wind farm before. The survey results showed that seven out of ten tourists (71%) holidaying in Ireland said that an increase in the number of wind farms in Ireland over the next few years would have no impact on their likelihood to visit Ireland again. Of those tourists who did see a wind farm in Ireland, 32% said it had a positive impact on the landscape, while 47% said it made no impact. Whitelee Wind Farm in Scotland for example attracts over 250,000 visitors a year.

The proposed Derryadd Wind Farm could potentially link with and form an integral part of other eco-tourism developments planned for the region including: Corlea Wetlands, The Royal Canal Greenway and The Mid-Shannon Wilderness Park. As outlined in the Mid Shannon Wilderness report *“The use of the bogs for other purposes such as renewable energy can be achieved in a compatible manner”*.



Proposed Mid-Shannon Wilderness with wind farm super imposed

087 7087022

derryaddwindfarm@bnm.ie

www.derryaddwindfarm.ie

Proposed Derryadd Wind Farm

Summer 2017 Newsletter

Community Engagement Forum

In November 2016, the first Community Forum engagement meeting was held. The purpose of the Forum is to fulfil Bord na Móna's commitment to engage with the local communities in the areas surrounding the proposed development and to ensure that community concerns, ideas and opinions on the proposed wind farm are listened to and understood and that community knowledge is harnessed for the benefit of all. Since then eight meetings have been held on the following dates:

- 8th December 2016
- 26th January 2017
- 2nd March 2017
- 28th March 2017
- 6th April 2017
- 4th May 2017
- 8th June 2017

An additional, special meeting was held on the 13th of April with Paul Riordan, Head of Bord na Móna Peat to discuss local fencing and drainage issues with members of the farming community.

Forum Guest Speakers

A number of guest speakers attended the meetings to provide advice and guidance on various topics as requested by the Forum. The speakers that have attended to date include:

- Donal Mac an Bheatha – Senior Planner Longford County Council who provided a comprehensive overview of the Strategic Infrastructure Development Planning process.
- Damien Kelly – AWN Consulting who gave a detailed presentation on noise – including infrasound.
- Enda Conaty – Wind Farm Operations Manager Bord na Móna who discussed the technical operations of wind farms.
- Mark McCorry – Head of Ecology Bord na Móna who discussed afteruse of peatlands.

Material Provided to the Forum

To date a number of studies and reports have been given to members of the Forum. Due to the size of the Environmental Impact Statement that typically accompanies planning applications for a wind farm development of this scale, Bord na Móna provided access to paper and digital copies of the Cloncreen Wind Farm Environmental Impact Statement (EIS). Cloncreen Wind Farm is a proposed 21 turbine Bord na Móna wind farm that was consented planning on the 5th of May 2017. The purpose of presenting these information packs was to enable the Forum to familiarise themselves with an EIS and to become informed on the typical material that is included in such documents in advance of the publication of the Derryadd EIS. Material circulated to date includes:

1. Advice on Wind Turbine and Horses – Guidance for Planners and Developers: The British Horse Society
2. Cloncreen EIS: Table of Contents
3. Cloncreen EIS: Chapter 1 – Introduction
4. Cloncreen EIS: Chapter 4 – Human Beings
5. Cloncreen EIS: Chapter 10 – Noise and Vibration
6. Strategic Infrastructure Development (SID) flowchart
7. Vindval 2012: The impacts of wind power on terrestrial mammals



087 7087022

derryaddwindfarm@bnm.ie

www.derryaddwindfarm.ie

Proposed Derryadd Wind Farm

Summer 2017 Newsletter

Substation Location

As part of the development an electrical substation will be required in order to connect the wind farm to the national grid. All power generating plants (such as power stations and wind farms) above a certain scale require this infrastructure. For example, in the case of Lanesborough Power Station the substation is located on the edge of the Shannon approximately 150m from Lanesborough Primary School. The planning application for the proposed Derryadd Wind Farm will outline two different alternatives as to how the wind farm could be connected to the national grid. The planning application will adopt a 'worst case scenario' by the inclusion of both substations. However only one substation will be built should the development be consented. The inclusion of two substation locations provides flexibility to the final grid connection solution for the wind farm.



1D208670 Photo: Peter Barrow Tel: 087-2559638, 27th November 2014

Mountlucas Substation

087 7087022

derryaddwindfarm@bnm.ie

www.derryaddwindfarm.ie

Proposed Derryadd Wind Farm

Summer 2017 Newsletter

Construction Timeline

If the proposed development is consented planning, the construction for a project of this scale would typically range from 18 - 24 months. However, even with planning granted, construction would typically not commence for another year or so to allow for grid connection offer, procurement of contracts and finance. It is envisaged that up to 120 jobs could be created as part of the construction phase of the project, should it be consented.



Construction work at Mountlucas Wind Farm

Access Points

Proposed access points have not yet been finalised. However it is intended to use existing site entrances where suitable. A new entrance to Derryadd bog will be constructed on the R392 Ballymahon road north of Derraghan village for large turbine component deliveries as well as construction traffic.



087 7087022

derryaddwindfarm@bnm.ie

www.derryaddwindfarm.ie

Proposed Derryadd Wind Farm

Summer 2017 Newsletter

Visit Mountlucas Wind Farm

Bord na Móna Powergen facilitates tours of Mountlucas Wind Farm. You can meet a member of Mountlucas Wind Farm staff by appointment and they will provide you with a personal tour of the site. Group bookings also welcome.

Alternatively, if you don't wish to take part in a tour you can visit the wind farm yourself. Our 7km public walkway/cycleway is open seven days a week (with the exception of December 21st). On-site parking facilities are available on both the R402 (Edenderry to Daingean road) and the R400 (Mount Lucas to Portarlinton road). In 2016, 30,000 visits were recorded using the amenity facility. All tours and access to the walkway/cycleway are free of charge.



Section of Mountlucas walkway

Independent Advice and Information

We encourage you to contact and seek advice and information from independent public bodies with an expertise in relation to renewable energy and in particular wind energy projects. The following contacts may be of benefit to you:

Sustainable Energy Authority of Ireland	Lo-call 1850 376 666	Info@seai.ie
Environmental Protection Agency	053-916 0600	info@epa.ie
Longford County Council	043-3343427	planning@longfordcoco.ie
Geological Survey of Ireland	LoCall 1890 449900	duty.geologist@gsi.ie
Inland Fisheries Ireland	01-8842600	info@fisheriesireland.ie
National Parks and Wildlife Services	1890 383 000	nature.conservation@ahg.gov.ie
Fáilte Ireland	1800 242473 or 01 8847101	CustomerSupport@failteireland.ie.
Irish Aviation Authority	01-671 8655	info@iaa.ie
Energy Institute UCD	01-716 1858	energy@ucd.ie

087 7087022

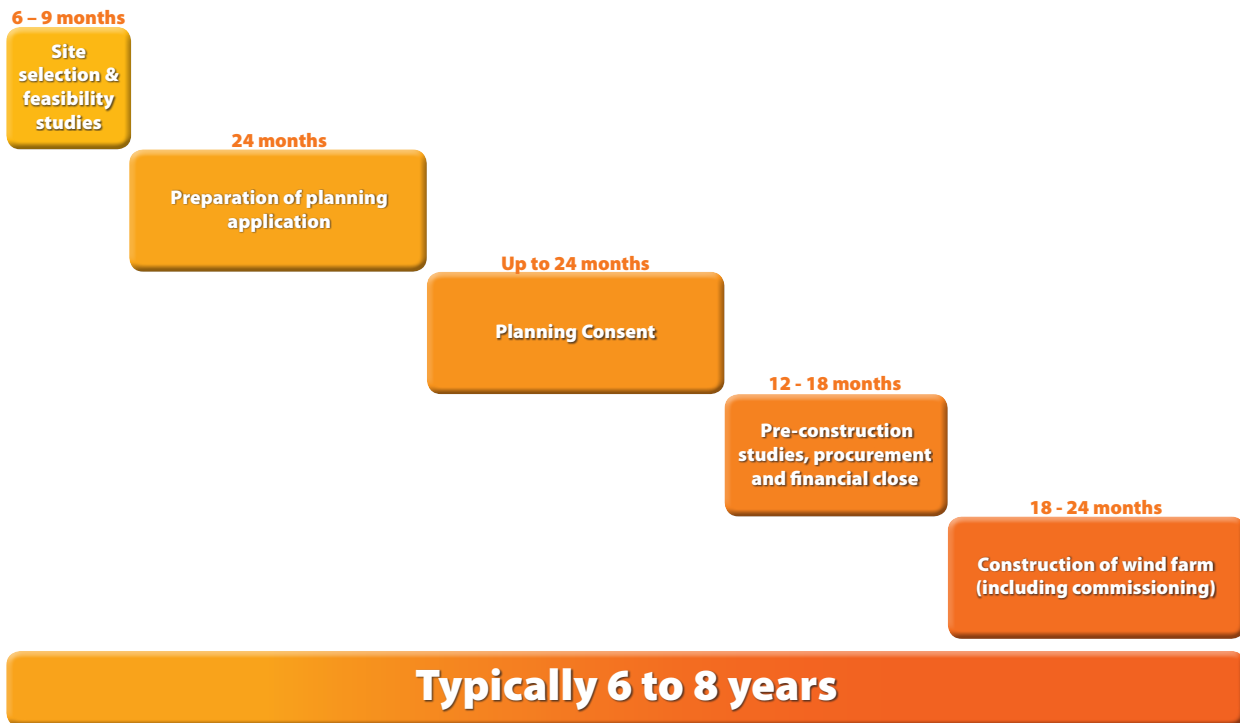
derryaddwindfarm@bnm.ie

www.derryaddwindfarm.ie

Proposed Derryadd Wind Farm

Summer 2017 Newsletter

How long does it take to develop a wind farm?



About Bord na Móna Powergen

At Bord na Móna, we powered the equivalent of over 140,000 homes with renewable energy in 2016. We are committed to delivering a sustainable industry to Ireland and providing energy security for decades to come. We manage a portfolio of thermal and renewable generation assets consisting of Edenderry Peat/Biomass Power Station, Cushaling peaking plant, Bellacorick, Bruckana and Mountlucas Wind Farms and Drehid Landfill Gas Facility. Along with Coillte, we also manage Sliabh Bawn Wind Farm. More than 50% of the electricity we generate now comes from renewable resources. Bord na Móna is developing wind energy and other renewable energy assets to reduce Ireland's dependency on energy imports and provide the renewable energy supply required by many major international companies located in Ireland.

Contact Us

The proposed Derryadd Wind Farm will benefit from participation by all interested parties during each stage of the development. If you wish to make a comment, would like to visit Mountlucas Wind Farm or require further information about the Derryadd Wind Farm please use the contact details below.



087 7087022

derryaddwindfarm@bnm.ie

www.derryaddwindfarm.ie

